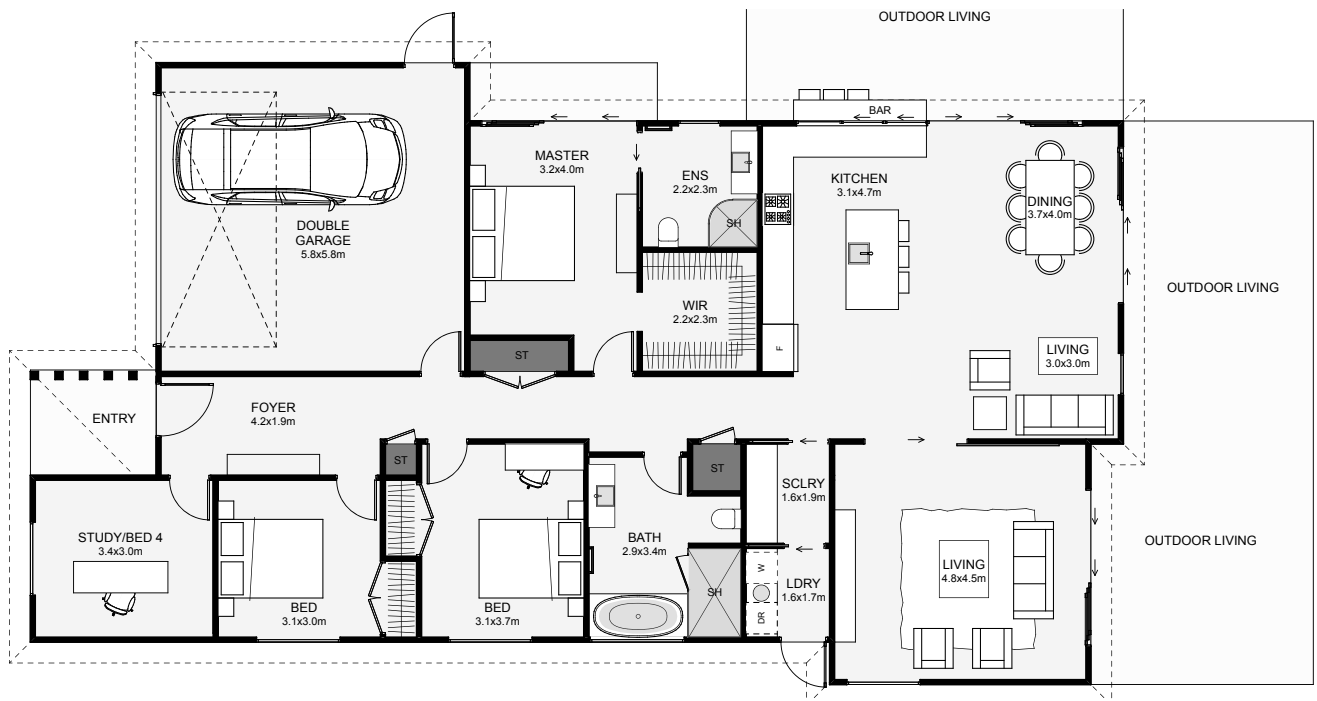




*If your section has a southern entry point, read on! The main living, dining and kitchen are positioned for a great northern outlook with the optional outdoor kitchen bar for evenings with family and friends. Some other great features include the dual living, the master's large walk-in wardrobe, one extra wide bedroom which could easily fit a desk and an optional study close to the front door if you plan on working from home!*



Floor Area: 199m<sup>2</sup>

2 4 2 2 20.9m 11.9m

Contact Lauren:

Ph: 027 528 7364

E: admin@forestviewhomes.co.nz

www.forestviewhomes.co.nz

FVH  
FORESTVIEW HOMES

"Bringing You Home"